



# Presentation of Reopening Plans

## August 5, 2020

# Goals of our Preparation and Planning

1. Prioritize safety, support, wellness, and understanding for the entire school community.
2. Implement Rising Tide's Key Design Elements.
  1. Provide a strong academic program that fosters the development of skills.
  2. Provide opportunities for students to connect to the Plymouth region.
  3. Provide students with a strong school community.
3. Hold strong to Rising Tide's identity through the challenges.

# Initial June 25 Guidance from DESE

- DESE has set a goal for the safe return of as many students as possible to in-person school settings.
- DESE has shared a clear set of health and safety requirements for in-person learning in the fall, grounded in scientific literature and discussions with expert medical advisors, which includes masks/face coverings, a minimum physical distance of three feet of space, hand washing/hand sanitizing, and staying home when sick.
- DESE is requiring all schools and districts to prepare and submit plans for three models: in-person learning with new safety requirements, a hybrid of in-person and remote learning, and the continuation of remote learning (to ensure continuity of learning throughout the school year, even if circumstances change).
- DESE will issue further guidance and support around transportation, handling a COVID-19 positive case in a school community, and athletics and other extracurricular programming.

# Collaborative Planning and Preparation for Reopening

- Rising Tide Program Leaders, Faculty Leaders, Crisis Response Team, Re-Entry Workgroup, Distance Learning Tools Review Group
- Board of Trustees
- Regular calls with DESE's Commissioner Riley
- Weekly communication with other charter school leaders
- Communication with leaders at Plymouth Public Schools, Plymouth Public Health Director

# Safety Preparations

1. HVAC and Air Quality: HEPA Filters and IWave Air
2. Safety Supplies: Masks, Hand Sanitizer, Single Paper Towels
3. Hand Washing, Hand Sanitizing Stations
4. Increased Signage and Ongoing Communication about Protocols
5. One-Way Hallways and Stairwells
6. Cleaning Equipment, Supplies, Schedule, and Protocols
7. Tents and Outdoor Space
8. Plans for Daily Screening of Staff Members and Students

# Feasibility Study - Interior Spaces for Students



# Feasibility Study - Interior Spaces for Students



# Feasibility Study - Interior Spaces for Students





# Public Health Data

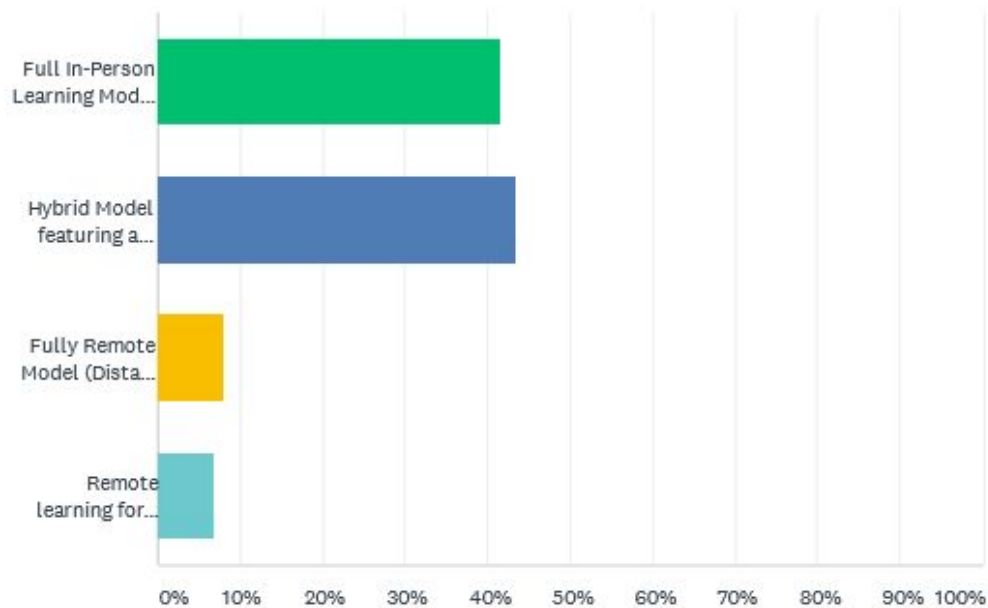
[Massachusetts Department of Public Health COVID-19 Dashboard](#)

[Harvard Global Health Institute COVID-19 Risk Level Map](#)

# Parent/Guardian Survey Results

Q4 Which model, in concept, is your current preference for reopening school in September?

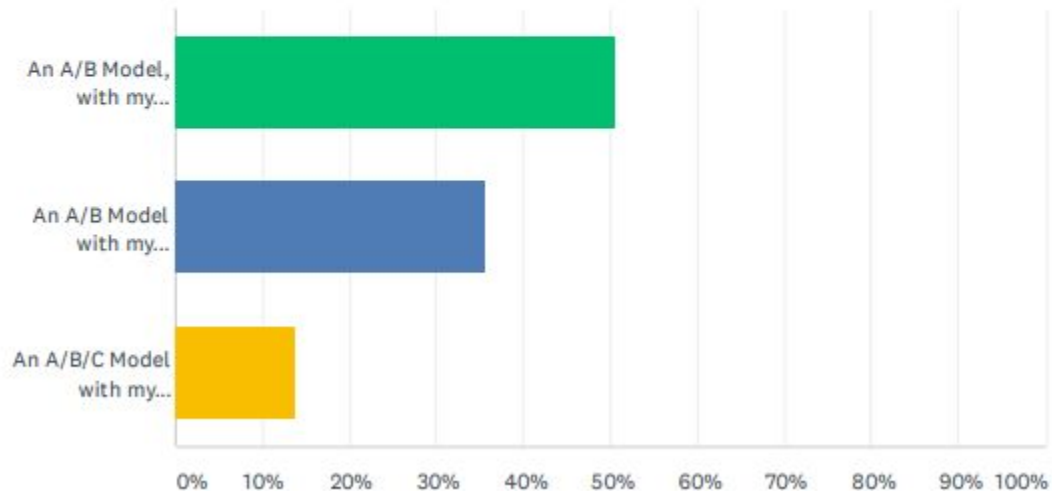
Answered: 467 Skipped: 0



# Parent/Guardian Survey Results

Q5 If Rising Tide implements a hybrid model, which concept would you prefer? If we are to observe 6 feet of physical distance at all times, we will not be able to have all the students in the building at the same time.

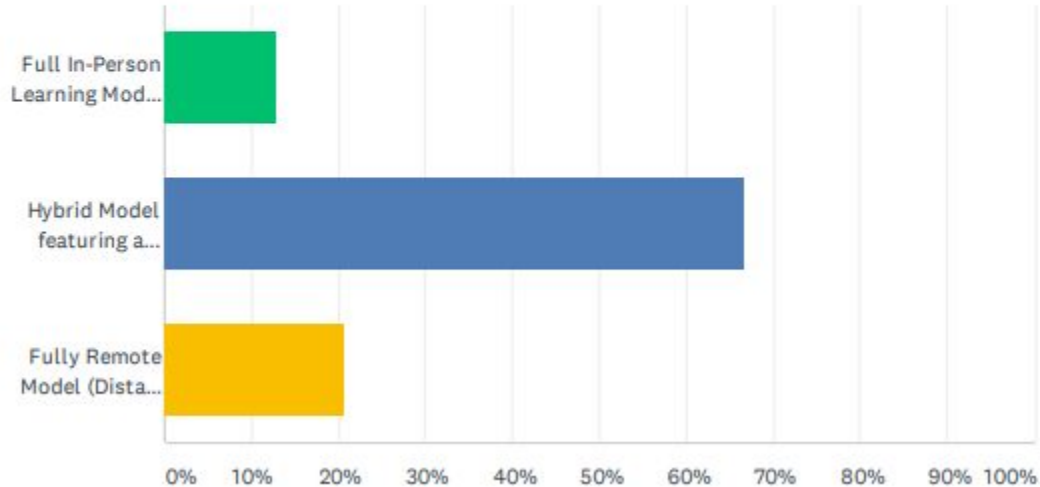
Answered: 446 Skipped: 21



# Faculty and Staff Survey Results

Q1 Which model, in concept, is your current preference for reopening school in September?

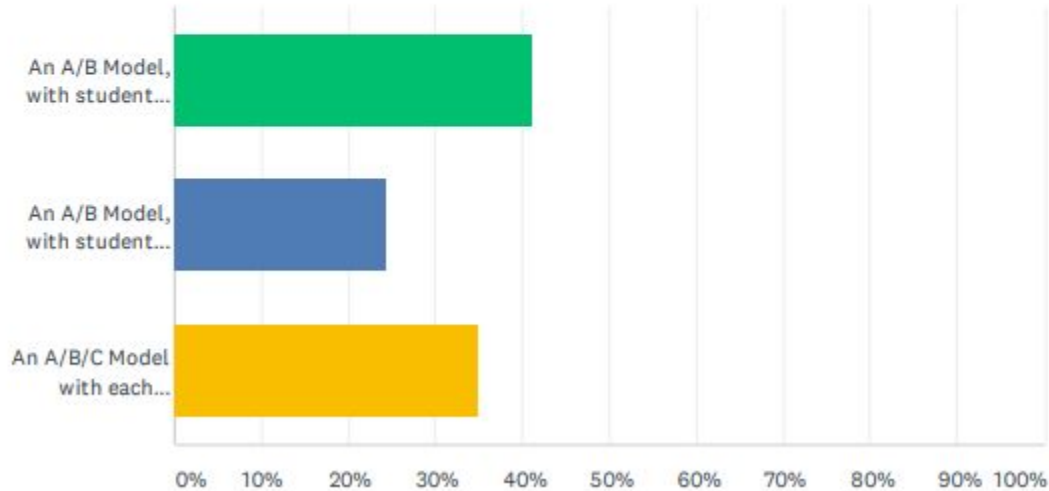
Answered: 63 Skipped: 4



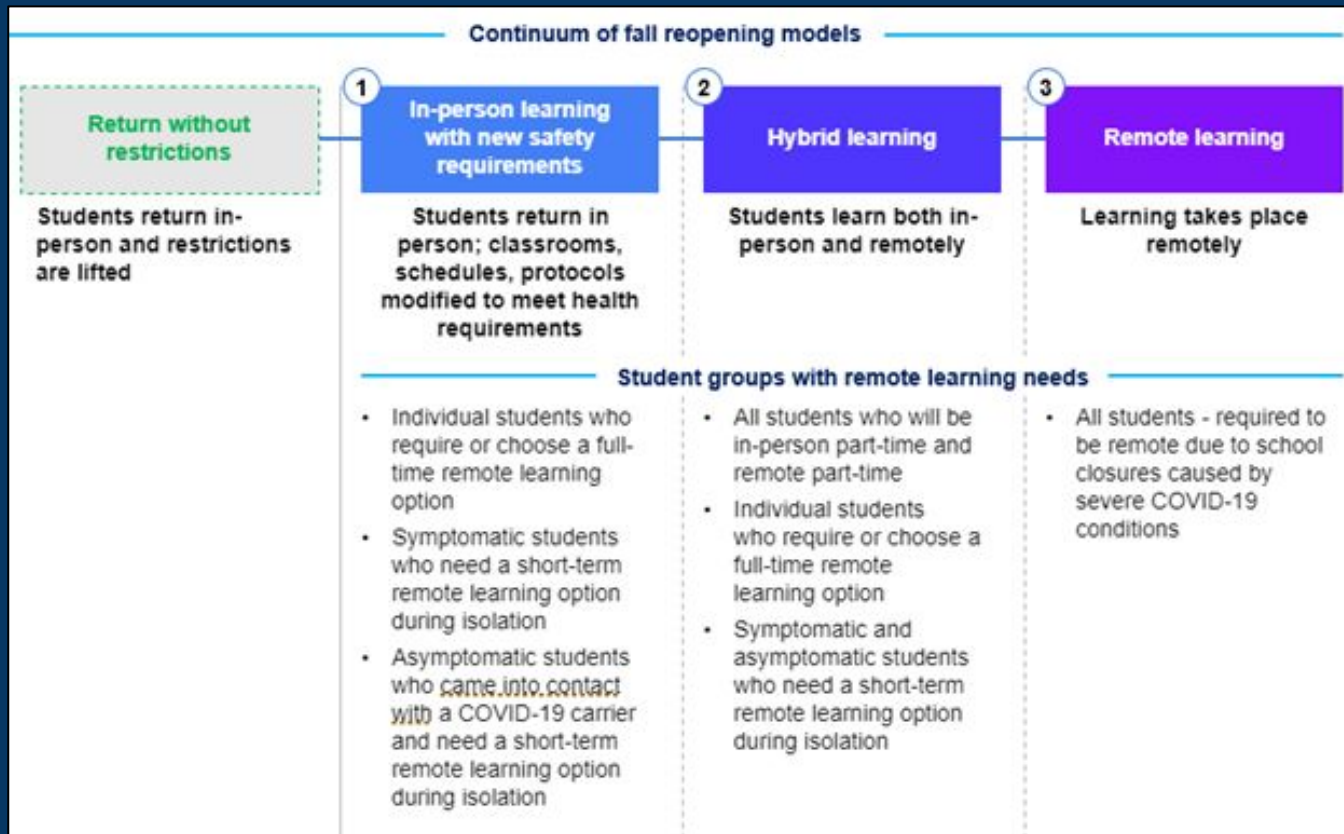
# Faculty and Staff Survey Results

Q5 If Rising Tide implements a hybrid model, which concept would you prefer? If we are to observe 6 feet of physical distance at all times, we will not be able to have all the students in the building at the same time.

Answered: 66 Skipped: 1



# Continuum of Fall Reopening Models



## Continuity Between Models at Rising Tide

- Regardless of the model, each Rising Tide students will be scheduled in the same core courses, with the same core teachers
- Each student will be a part of an Advisory group
- Each student will be connected to each course and core teacher through Google Classroom
- Each student, regardless of the model, will have the opportunity to make academic progress, get support from Rising Tide teachers, and complete all assignments.
- Each student will be assigned a chromebook
- Expectations will remain high for each student
- Each student will participate in Rising Tide's standard grading scale
- Training and support for students and parents/guardians

## Fully Remote Model Key Elements

- Similar Monday, Tuesday, Thursday, Friday concept from Distance Learning in the Spring
- Weekly structure that includes live, synchronous work with teachers and other students and structured time for independent and collaborative work
- Increase of expectations and rigor, with support
- Increase of structured learning time
- More varied asynchronous work expectations for different grades
- Increase of academic support opportunities
- Wednesday as a flex day for additional Rising Tide programming, skills practice, ongoing faculty planning and professional development.



# REMOTE and HYBRID SCHEDULE CONCEPT: Middle School

Monday	Tuesday	Wednesday	Thursday	Friday
Advisory	Advisory	Morning Meeting	Advisory	Advisory
Arts English Math Science Social Studies STEM/Hum./WL	Arts English Math Science Social Studies STEM/Hum./WL	Wellness Future Planning Skills Practice Clubs	Arts English Math Science Social Studies STEM/Hum./WL	Arts English Math Science Social Studies STEM/Hum./WL
Advisory	Advisory		Advisory	Advisory
Cohort A in School	Cohort A in School	Cohort A at Home	Cohort A at Home	Cohort A at Home
Cohort B at Home	Cohort B at Home	Cohort B at Home	Cohort B at School	Cohort B at School

# REMOTE and HYBRID SCHEDULE CONCEPT: Upper School

Monday	Tuesday	Wednesday	Thursday	Friday
Advisory	Advisory	Morning Meeting	Advisory	Advisory
Block A Block B Block C Block D	Block E Block F Block G Block H	Wellness Future Planning Skills Practice Clubs	Block A Block B Block C Block D	Block E Block F Block G Block H
Cohort A in School	Cohort A in School	Cohort A at Home	Cohort A at Home	Cohort A at Home
Cohort B at Home	Cohort B at Home	Cohort B at Home	Cohort B at School	Cohort B at School

## Hybrid Model Key Elements

- Academic groups/course sections divided into smaller cohorts
- A/B model with roughly 50% of students in the building twice a week
- Cohorts will include siblings, carpools
- Students in classrooms with a minimum of six feet of distance, in rows facing the teaching wall, with seating assignments
- Teachers will be at school, in-person, with students M/T, TH/F
- Wednesdays will be a fully remote day
- Teachers will support all students in courses through in-person teaching and learning, Google Classroom, and asynchronous assignments and support
- On remote days in hybrid model, students will follow the same schedule and will have live check-ins with teacher at start of class

## Full In-Person Model Key Elements

- Students in classrooms with a minimum of three feet of distance, in rows facing the teaching wall, with seating assignments
- Students and staff members will wear masks
- Mask breaks for students will be included in the schedule
- Middle School - Smaller cohorts of students for academic groups
- Upper School - Larger cohorts of students to minimize mixing
- New protocols for arrival and dismissal for proper spacing
- Grab and Go lunch provided
- Lunch outdoors under tents
- Suspended use of lockers, cubbies, refrigerator, microwave
- Early Program and Homework Program will operate with proper spacing

## Remote Learning Beyond Primary Model

- Students will have same teachers and courses as in-person model
- Teachers will support all students in courses through Google Classroom, and asynchronous assignments and support
- Students will follow same schedule as other students, with live check-ins at the start of each class
- Additional staff will serve as Remote Learning Coaches to support the primary teachers and the students

## Proposal for Revision to 2020-2021 School Calendar

*“To provide sufficient training for educators and staff, I will reduce the 180 day and student learning time requirements for the 2020-2021 school year to 170 days and 850 hours (for elementary schools) and 935 hours (for secondary schools), so long as districts begin providing instruction to students no later than September 16, 2020.”*

*-July 27, 2020 Memo from DESE Commissioner Riley*